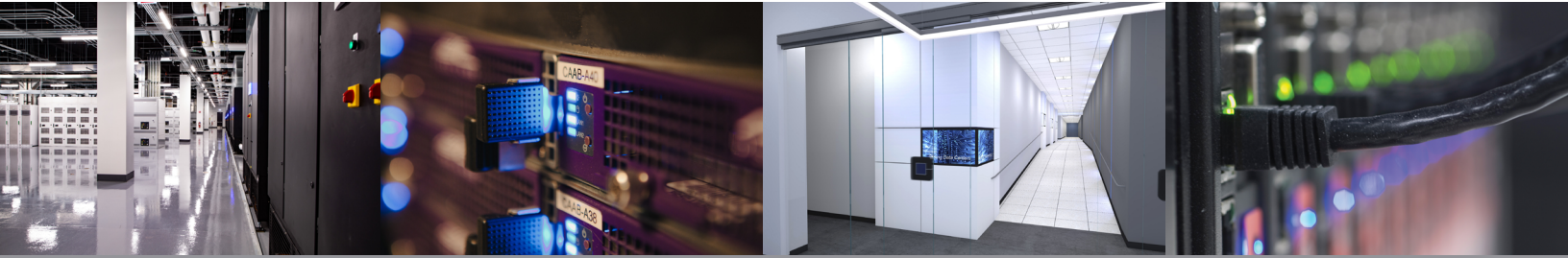


# SV7

**3020 Coronado Drive, Santa Clara, CA 95054**



CoreSite's SV7 facility is part of the Santa Clara campus, comprised of more than 775,000 square feet of colocation space that can support nearly any compute requirement with the latest in data center efficiency and redundancy designs. SV7 also supports hybrid and multicloud solutions with low latency access to the network, cloud and enterprise community within CoreSite's facilities in Santa Clara, as well as the rest of CoreSite's Silicon Valley data center market.

SV7 is a modern, purpose-built facility that enables organizations to control costs and leverage always-on performance and secure, private IT environments to future-proof their businesses. Whether you need 100% SLA uptime backed by a highly trained operational and security team or the capacity to support compute-intensive, dense requirements, we have you covered.

To learn more about interconnection opportunities in Silicon Valley, visit our website [here](#).

## AMENITIES



WiFi available



Conference room and office space available



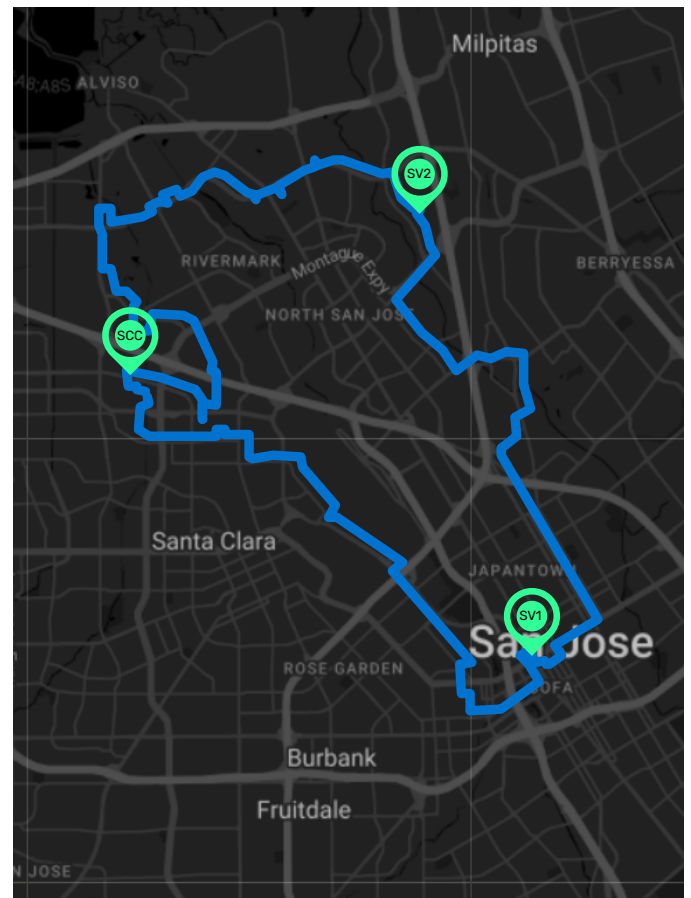
24x7x365 tech lounge with kitchen



Secure on-site parking available

**+1.866.777.CORE**

**Info@CoreSite.com**



# SV7 Technical Specifications



## Space

Colocation Space	231,000 square feet
Deployments	Cabinets, cages, private suites and build-to-suit Rooftop space available
Power Availability	AC
Fitout	Turn-key, infrastructured shell and powered shell

## Floor

Clear Height	11' above 36" raised floor
--------------	----------------------------



## Interconnection

Software-Defined Networking Platform	Open Cloud Exchange®
Peering Exchanges	Any2Exchange® for Internet peering and AMS-IX Bay Area
Diversity	Diverse POEs, MDFs and IDF's
Carrier Availability	See our carrier list located at <a href="https://www.coresite.com/core-site/carrier-list">CoreSite.com/carrier-list</a>
Cross Connects	Fiber, copper and coaxial
Enterprise Internet	Blended IP, 10Mbps to 10Gbps

## Colocation

- Private Cage and Suite
- Build-to-Suit
- Secure Cabinet
- AC Power Circuits
- DC Power Circuits
- Antenna

## Services

- CoreSite Interconnect Gateway®
- Public Cloud Providers
- Additional Cloud Services

## Compliance Certifications

SOC 1 Type 2, SOC 2 Type 2, ISO 27001, NIST 800-53, PCI DSS, HIPAA



## Security

Access	Key cards, biometric scanners and mantrap entries 8' perimeter fence, controlled site access
Cameras	Perimeter and interior IP-DVR
Security Officers	24x7x365 security qualified personnel

## Structure

Elevators	Passenger: 5,000 lbs. Freight: 10,000 lbs.
Loading Dock	Hydraulic lift gate
Hardened Exterior	1.5 Importance Factor
Column Spacing	30'4" x 31'

## Efficiency

Cooling	Variable speed with water-side heat exchanger
Chiller	Self-contained rooftop AC units with integrated dehumidification system and air-side economization
Electrical	High-efficiency UPS systems
Life Safety	Dual-interlock pre-action dry-pipe sprinkler system with VESDA
Lighting	Lutron Eco-System lighting controls, LED lighting
Utility Power	Power taken at 12kV to achieve rate reduction and distribution efficiencies
Monitoring	RF Code readers for pin-point accuracy of temperature and humidity within customer deployments

## Reliability

Utilities	Silicon Valley Power
Generators	N+1 redundancy
Operations	24x7x365 remote hands
Uptime	100% uptime SLA
Fuel Storage	24 hours, on-site
UPS/PDU/RPP	2N UPS redundant
Mechanical	N+1 redundancy
BMS Controls	State-of-the-art mission-critical controls and monitoring
Flood Plain	Systems above 500-year flood plain

Find out more.  
Click. Call. Write



[CoreSite.com](https://www.coresite.com) | +1 866.777.CORE | [Info@CoreSite.com](mailto:Info@CoreSite.com)